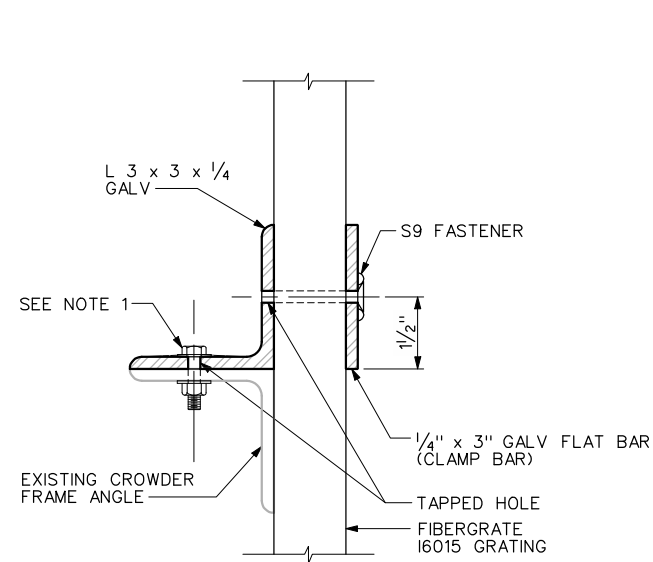
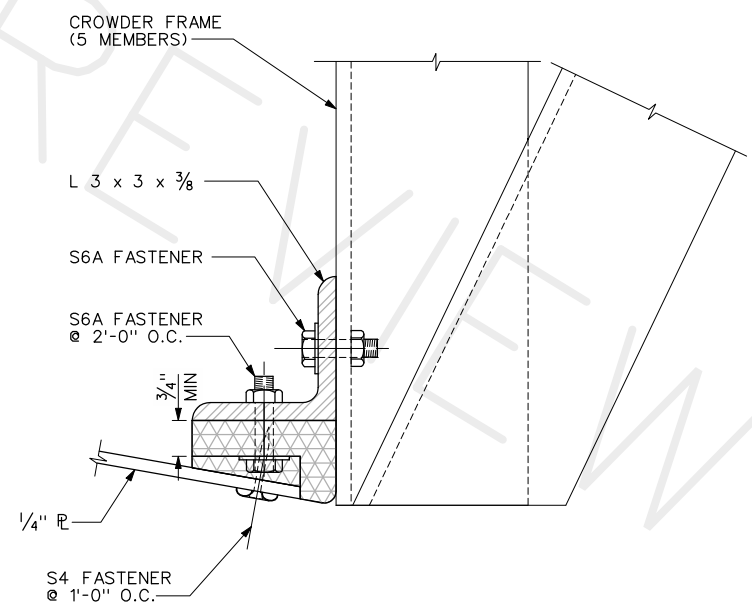


NOTES:

1. REPLACE FASTENERS IN EXISTING CROWDER FRAME ANGLE. USE SAME FASTENER SIZE. REPLACE AT ALL LOCATIONS USED TO ATTACH EXISTING CROWDER SCREEN. USE WASHER UNDER BOLT HEAD AND NUT. DOUBLE NUT OR APPLY LOCTITE THREAD LOCKER.



SECTION E
SCALE: 6" = 1'-0" 3R



SECTION F
SCALE: 6" = 1'-0" 5R

FASTENER SCHEDULE		
MARK	SIZE	DESCRIPTION
S1	1/4" - 20 X 1"	FLAT HEAD PHILLIPS MACHINE SCREW & DROP-IN ANCHOR
S2	3/8" - 16 X 1"	FLAT HEAD PHILLIPS MACHINE SCREW & DROP-IN ANCHOR
S3	#10 X 1 1/2"	SQUARE DRIVE DECKBOARD COUNTERSUNK WOOD SCREW
S4	#10 X 1 1/2"	SQUARE DRIVE DECKBOARD COUNTERSUNK WOOD SCREW w/ 1/4" SS COUNTERSUNK FINISHING WASHER
S5	1/4 "-20	FLAT HEAD SOCKET CAP SCREW w/ 1/4" SS COUNTERSUNK FINISHING WASHER
S6	3/8" - 16 X 1"	CAP SCREW AND NUT
S6A	3/8" x 16 x 2"	CAP SCREW AND NUT
S7	3/8" x 1 1/2"	FLAT HEAD MACHINE SCREW w/ WASHER & NUT
S8	3/8" x 1 1/2"	PAN HEAD SCREW
S9	1/4" DIA.	FLAT HEAD MACHINE SCREW w/ SS FINISH WASHER
S10	1/2" x 2"	CAP SCREW AND NUT
S11	1/2" x 5 1/2"	CAP SCREW AND NUT
EX1	1/4" X 2"	STUD EXPANSION ANCHOR & WASHER
EX2	3/8" X 1 5/8"	STUD EXPANSION ANCHOR & WASHER
EX3	1/2" x 2 1/2"	STUD EXPANSION ANCHOR AND WASHER
BR1	3/16" X 0.50"	BLIND RIVET

FASTENER NOTES:

1. ALL FASTENERS SHALL BE 18-8 STAINLESS STEEL UNLESS NOTED OTHERWISE.
2. EXPANSION ANCHORS MAY BE AISI 304.
3. STUDS AND MACHINE SCREWS SHALL BE TREATED WITH LOCTITE BLUE THREADLOCKER.

4:39:09 PM 7/8/2005 PDF_half.plt PENTABLE.TBL L:\2005\05-022\CADD\Struct\sheet\10R.dgn



NO.	DATE	BY	CKD.	APPR.	REVISION

SCALE AS SHOWN	DESIGNED BY DA
PROJECT NO. 05-022	DRAWN BY VR
	CHECKED BY DS
	APPROVED BY DM

INCA INCA ENGINEERS INC.
400 112th Ave. NE, Suite 400
Bellevue, WA 98004

YAKIMA TRIBAL FISHERIES
PROSSER DAM ADULT PIT TAG
RIGHT BANK FISH LADDER
CROWDER MODIFICATION
SECTIONS AND DETAILS

SHEET
OF
10R