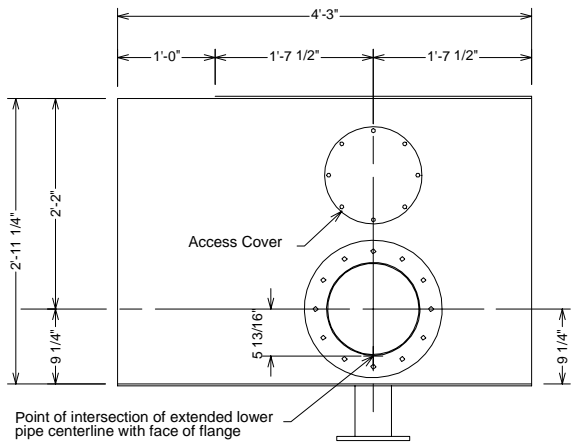
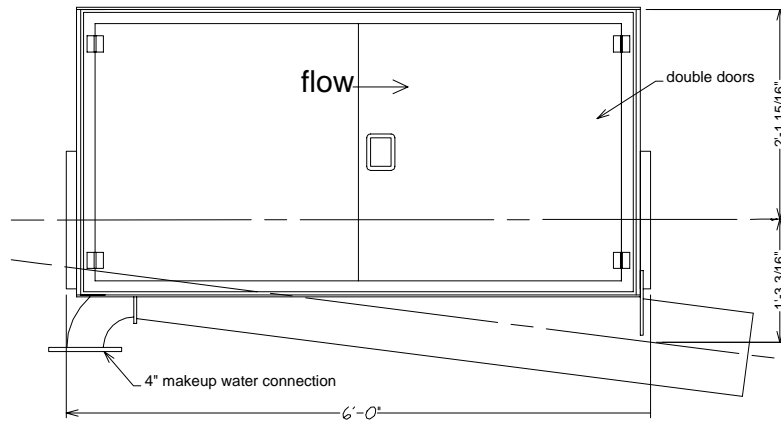


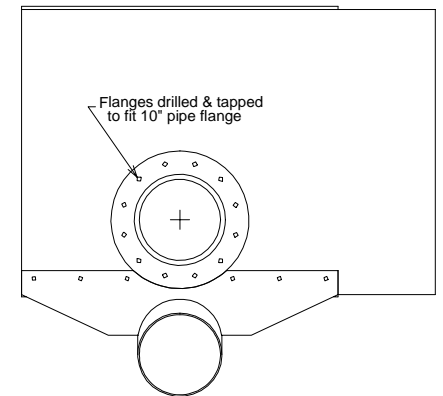
PLAN VIEW



UPSTREAM END



ELEVATION VIEW



DOWNSTREAM END

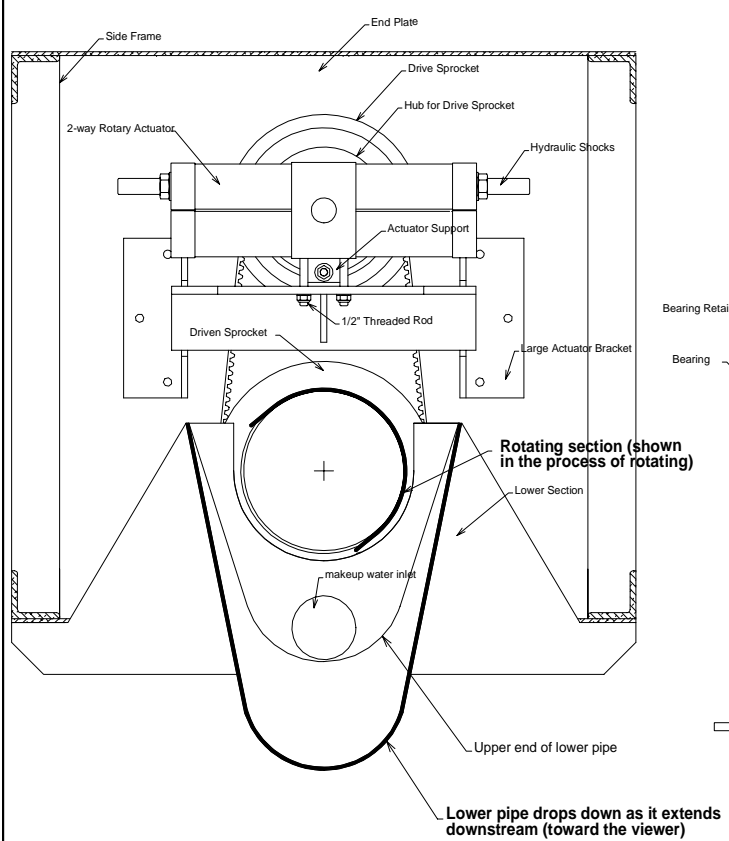
Scale: 3/4" = 1'-0"

AS-BUILT 8/1/97

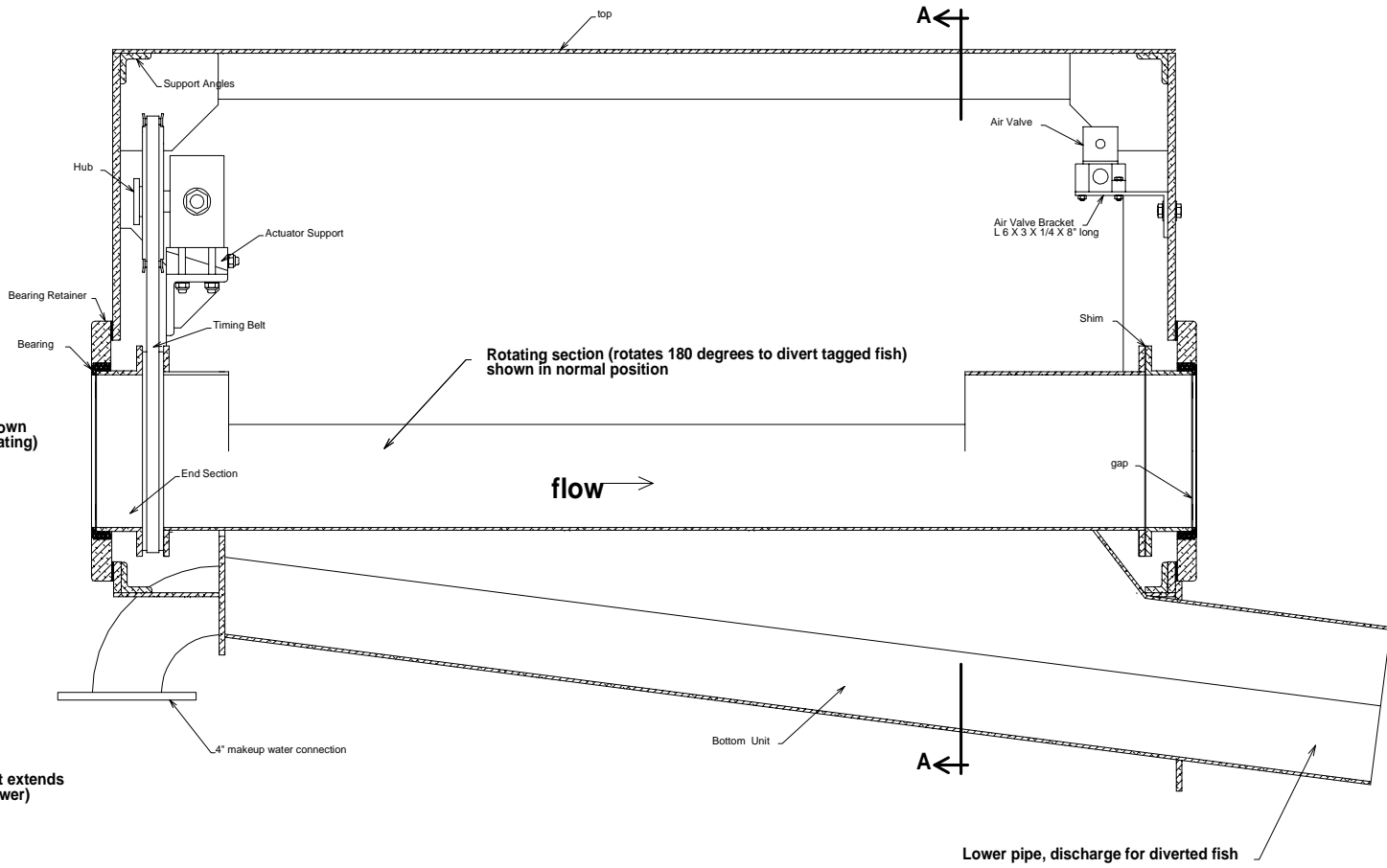
John Day Juvenile Facility
Rotating Gates

sht. #2 2-Way Gate Plan & Elevations

NOAA, National Marine Fisheries Service 3/97

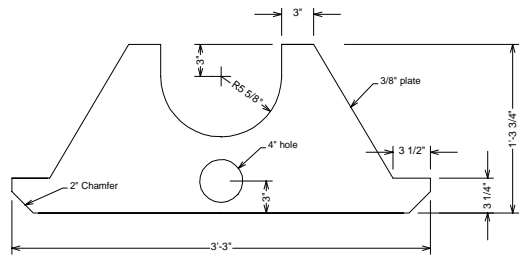


TRANSVERSE SECTION A-A

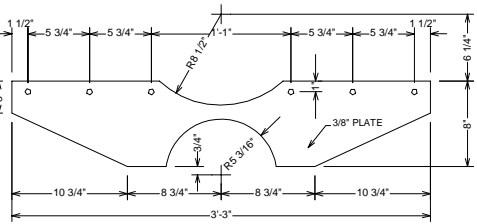


LONGITUDINAL SECTION

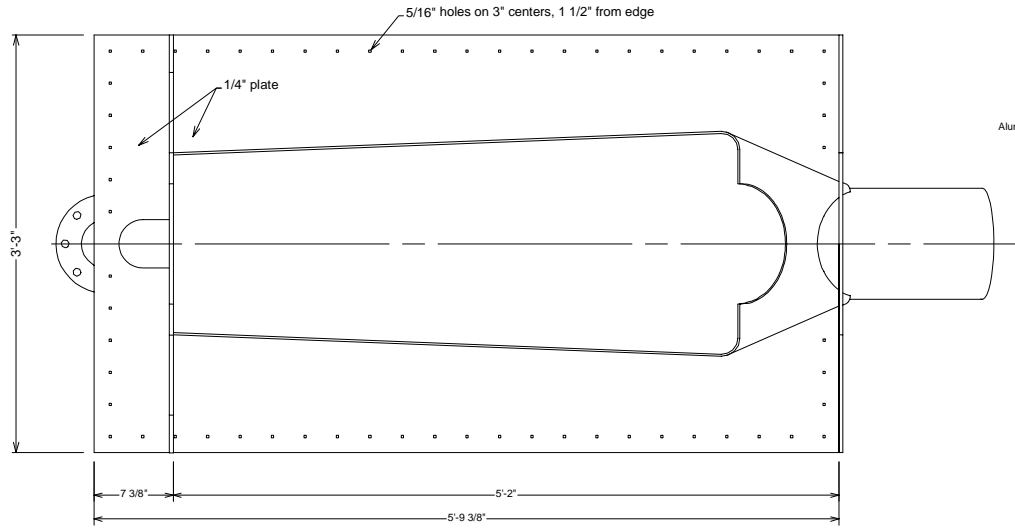
Scale: 1 1/2" = 1'-0"



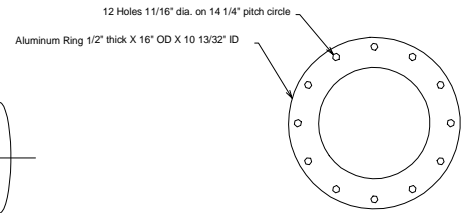
DOWNSTREAM BULKHEAD



UPSTREAM BULKHEAD

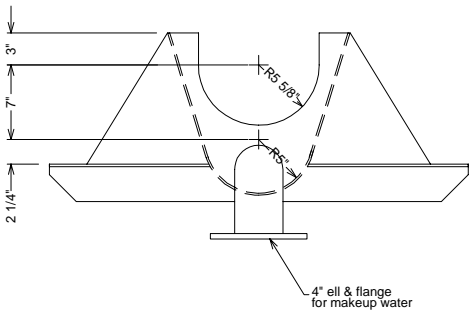


PLAN

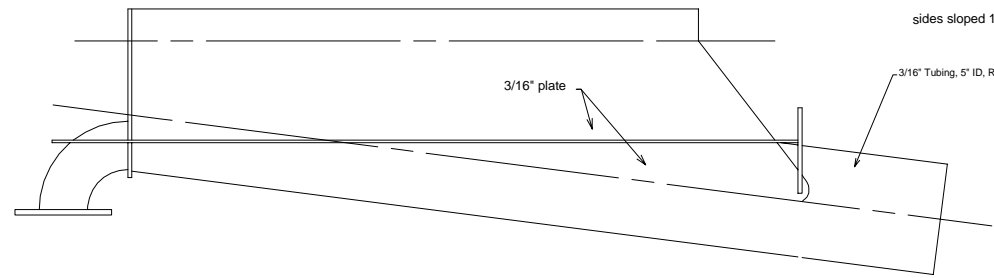


FLANGE

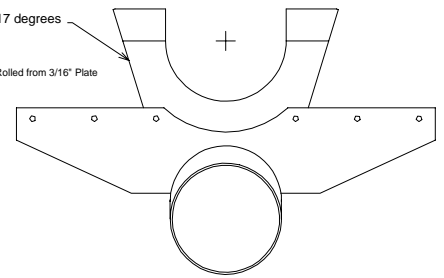
Required for Bolting Lower Unit to 10" Pipe Flange
1 required - ship loose



UPSTREAM END VIEW



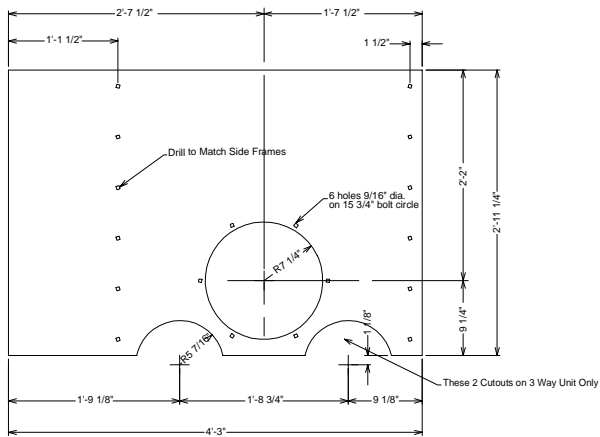
ELEVATION



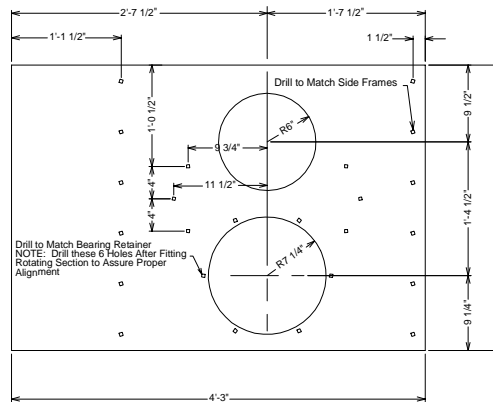
DOWNSTREAM END VIEW

Scale: 1" = 1'-0"

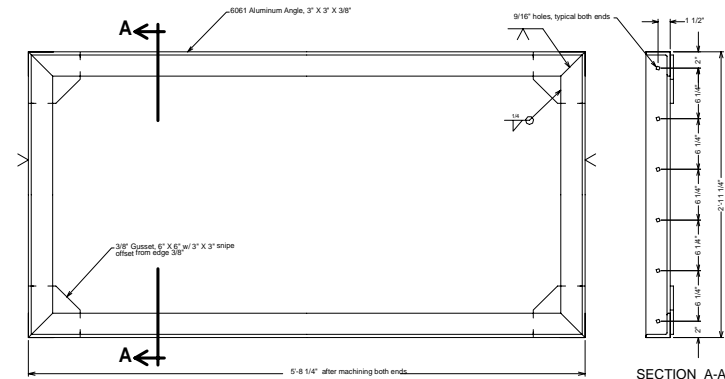
AS-BUILT	8/1/97
John Day Juvenile Facility	
Rotating Gates	
sht. #6 2-Way Gate Bottom Section	
NOAA, National Marine Fisheries Service 3/97	



DOWNSTREAM END

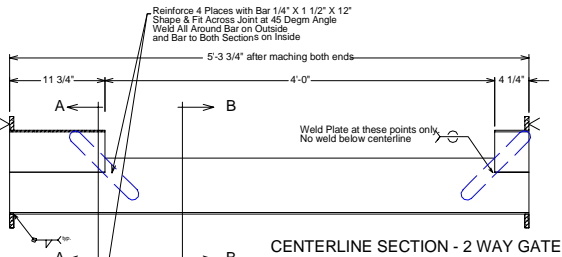


UPSTREAM END

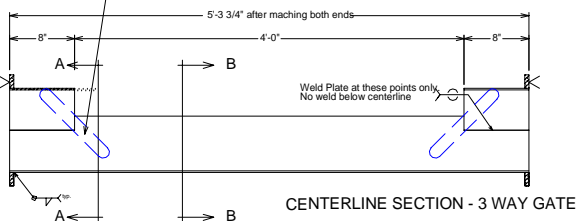


SIDE FRAME

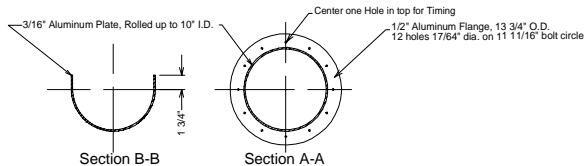
END PLATES



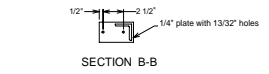
CENTERLINE SECTION - 2 WAY GATE



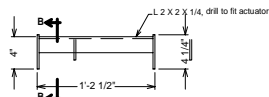
CENTERLINE SECTION - 3 WAY GATE



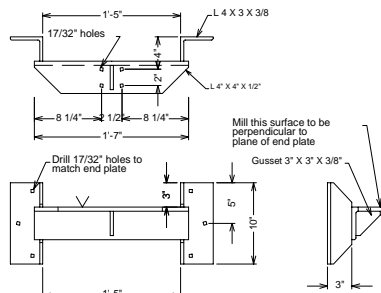
CENTER SECTIONS



SECTION B-B

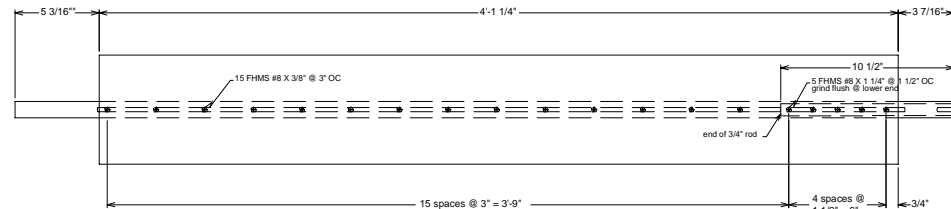


SMALL ACTUATOR BRACKET

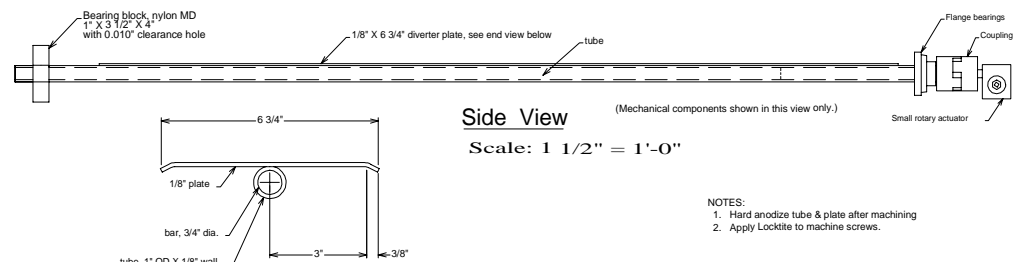


LARGE ACTUATOR BRACKET

BRACKETS FOR ACTUATORS



Top View



Side View

Scale: 1 1/2" = 1'-0"

End View

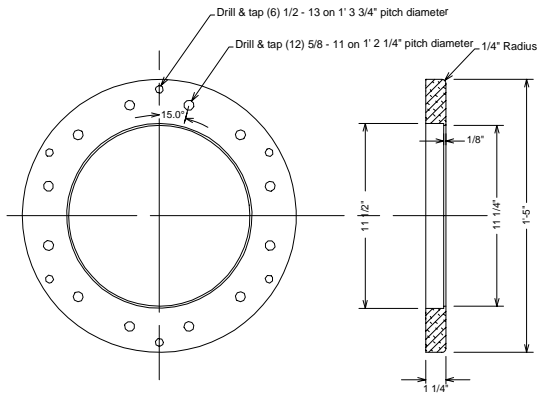
Scale: 3" = 1'-0"

DIVERTER VANE

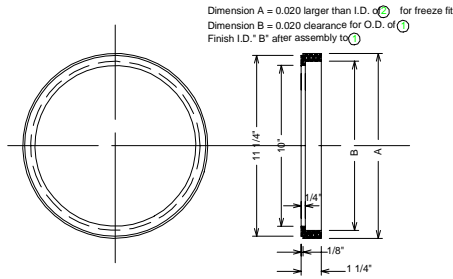
Scale: 3/4" = 1'-0" except as noted

AS-BUILT 8/1/97

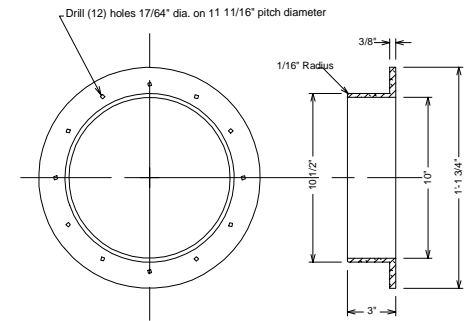
John Day Juvenile Facility
Rotating Gates
 sht. #7 Fabricated Parts
 NOAA, National Marine Fisheries Service 3/97



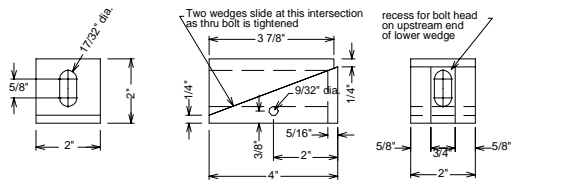
② Bearing Retainer



Retainer Bearing



① End Section

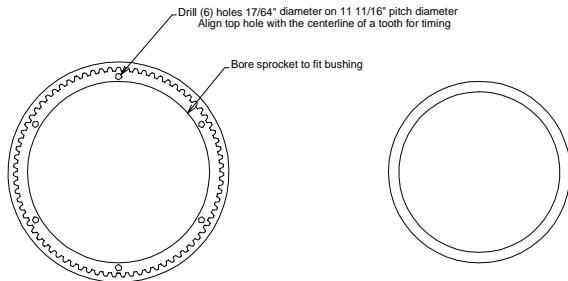


Actuator Support Wedges

Material: 316 Stainless Steel
(Shown in Raised Position)

Scale: 3" = 1'-0"

Note: bolt to 3/8" x 1" x 1 1/2" aluminum stop between all thread on one side to prevent movement of wedges.

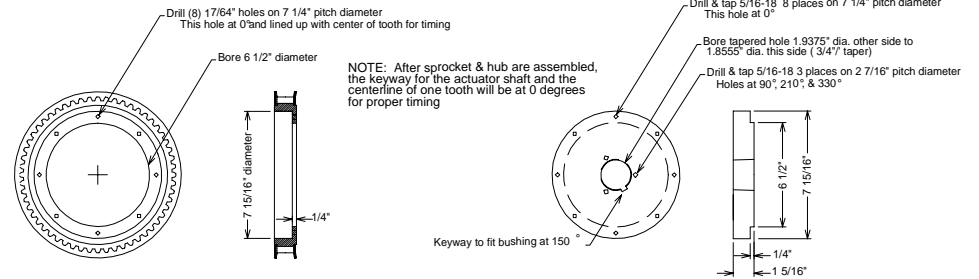


Modification of Gates 14M-75S-20 Sprocket

Driven Sprocket & Bushing

Bushing for Sprocket

Scale: 1 1/2" = 1'-0"
Except as Noted



Drive Sprocket & Bushing

Gates 14M-56S-20 Sprocket modified to accept aluminum hub

Hub for Gates 14M-56S-20 Sprocket

AS-BUILT 8/197

John Day Juvenile Facility

Rotating Gates

sht. #8 NC Machined Parts

NOAA, National Marine Fisheries Service 3/97