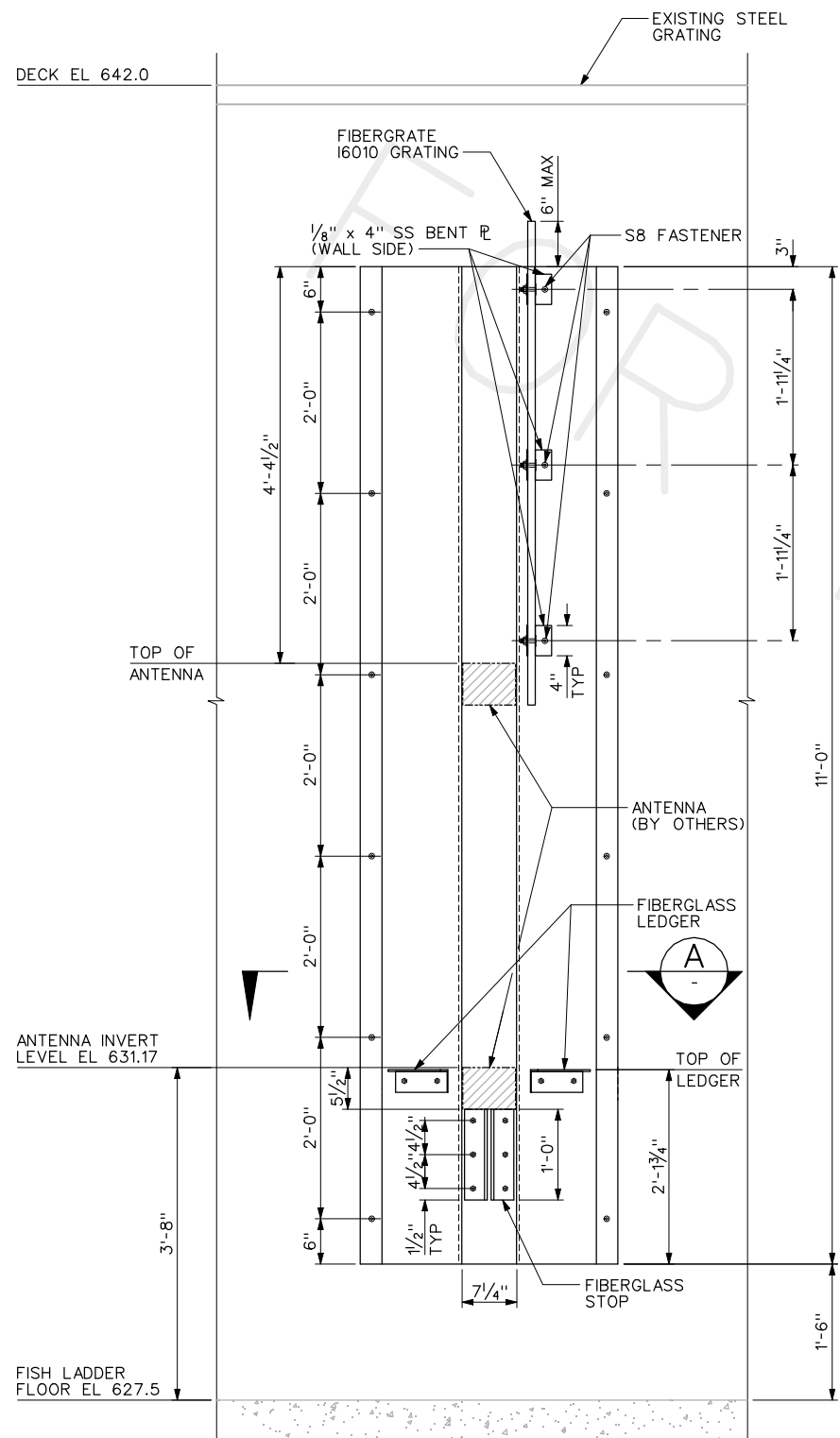
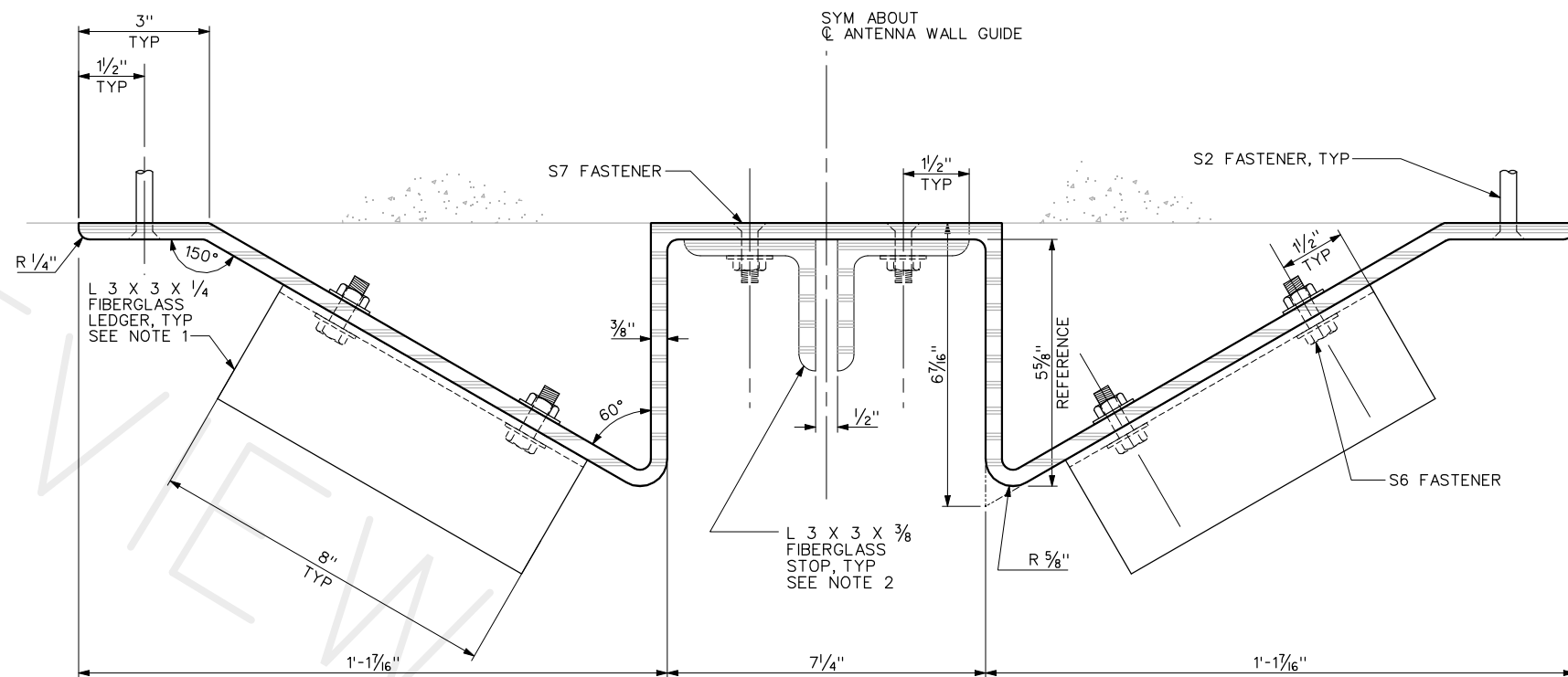


4:38:14 PM 7/8/2005 PDF_half.plt PENTABLE.TBL L:\2005\05-022\CADD\Struct\sheet\6R.dgn



WALL GUIDE ELEVATION C
SCALE: 1" = 1'-0" 3R

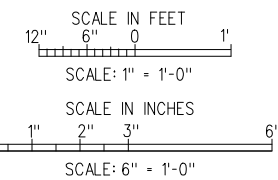
NOTE: FISH COUNTER TABLE NOT SHOWN



SECTION A
SCALE: 6" = 1'-0"

NOTE: ANTENNA AND FISH COUNTER TABLE NOT SHOWN

- NOTES:
1. EPOXY AND MECHANICALLY FASTEN FIBERGLASS LEDGER ANGLES TO ANTENNA GUIDE. FASTENERS SHALL BE S6, TWO PER ANGLE.
 2. EPOXY AND MECHANICALLY FASTEN FIBERGLASS STOP ANGLES TO ANTENNA GUIDE. FASTENERS SHALL BE S7 (COUNTERSUNK), THREE PER ANGLE.
 3. FOR FASTENER SCHEDULE SEE SHEET 10R.



NO.	DATE	BY	CKD.	APPR.	REVISION

SCALE AS SHOWN	DESIGNED BY DA
PROJECT NO. 05-022	DRAWN BY VR
	CHECKED BY DS
	APPROVED BY DM

INCA INCA ENGINEERS INC.
400 112th Ave. NE, Suite 400
Bellevue, WA 98004

YAKIMA TRIBAL FISHERIES
PROSSER DAM ADULT PIT TAG
RIGHT BANK FISH LADDER
ANTENNA WALL GUIDE
SECTIONS & DETAILS

SHEET OF 6R