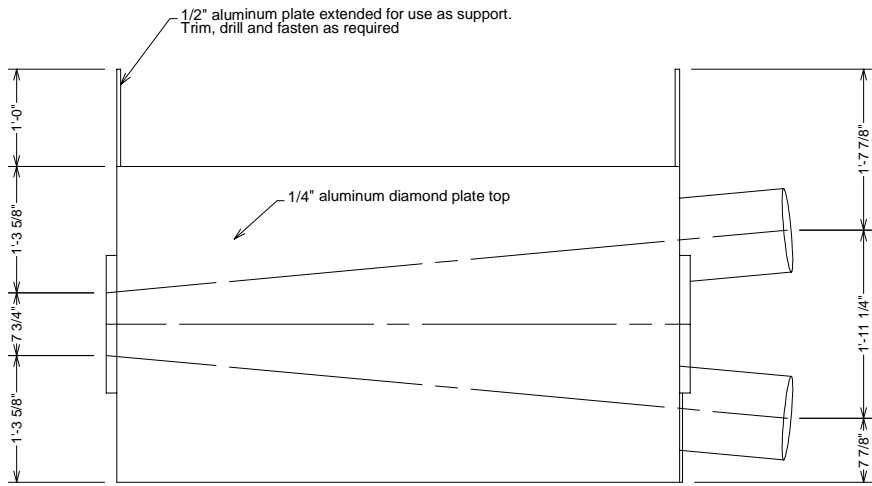
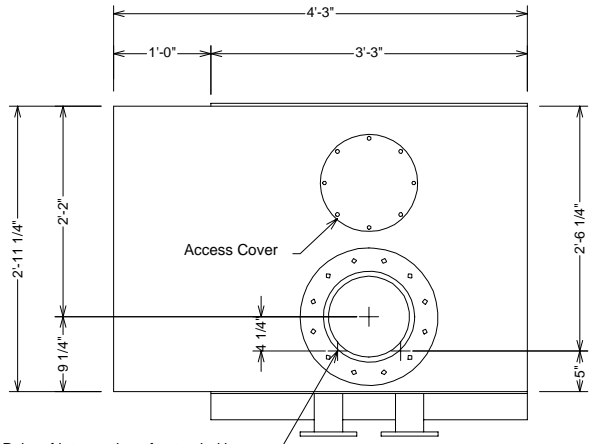


INDEX TO DRAWINGS

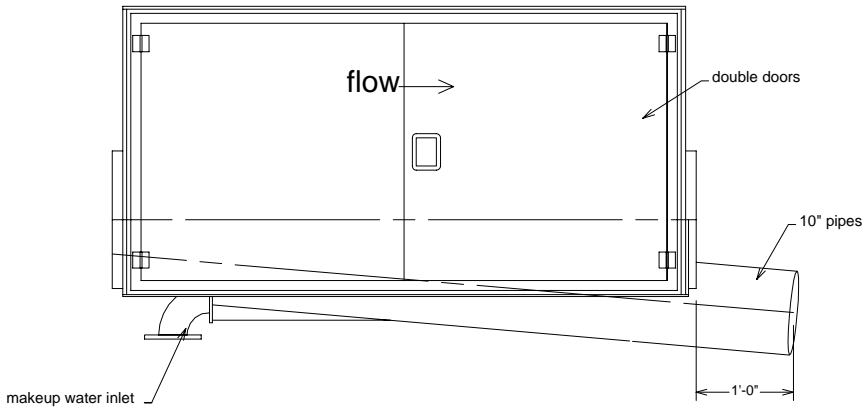
1. Plan & Elevation 3-way
2. Plan & Elevation 2-way
3. Cross Sections 3-way
4. Cross Sections 2-way
5. Bottom Unit 3-way
6. Bottom Unit 2-way
7. Fabricated Parts
8. NC Machined Parts
9. Bill of Material



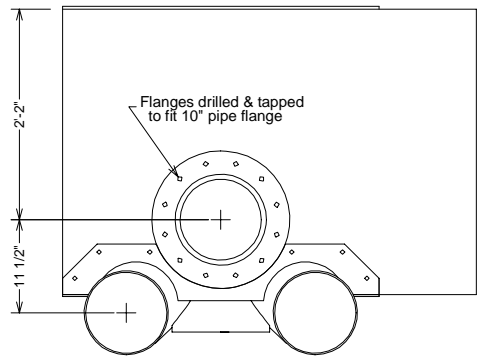
PLAN VIEW



UPSTREAM END



ELEVATION VIEW



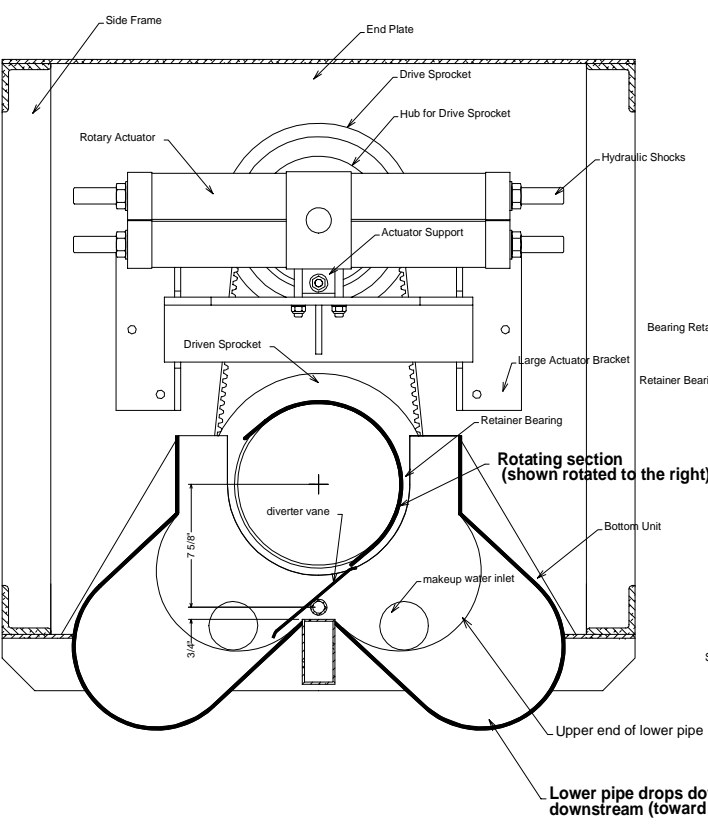
DOWNSTREAM END

Scale: 3/4" = 1'-0"

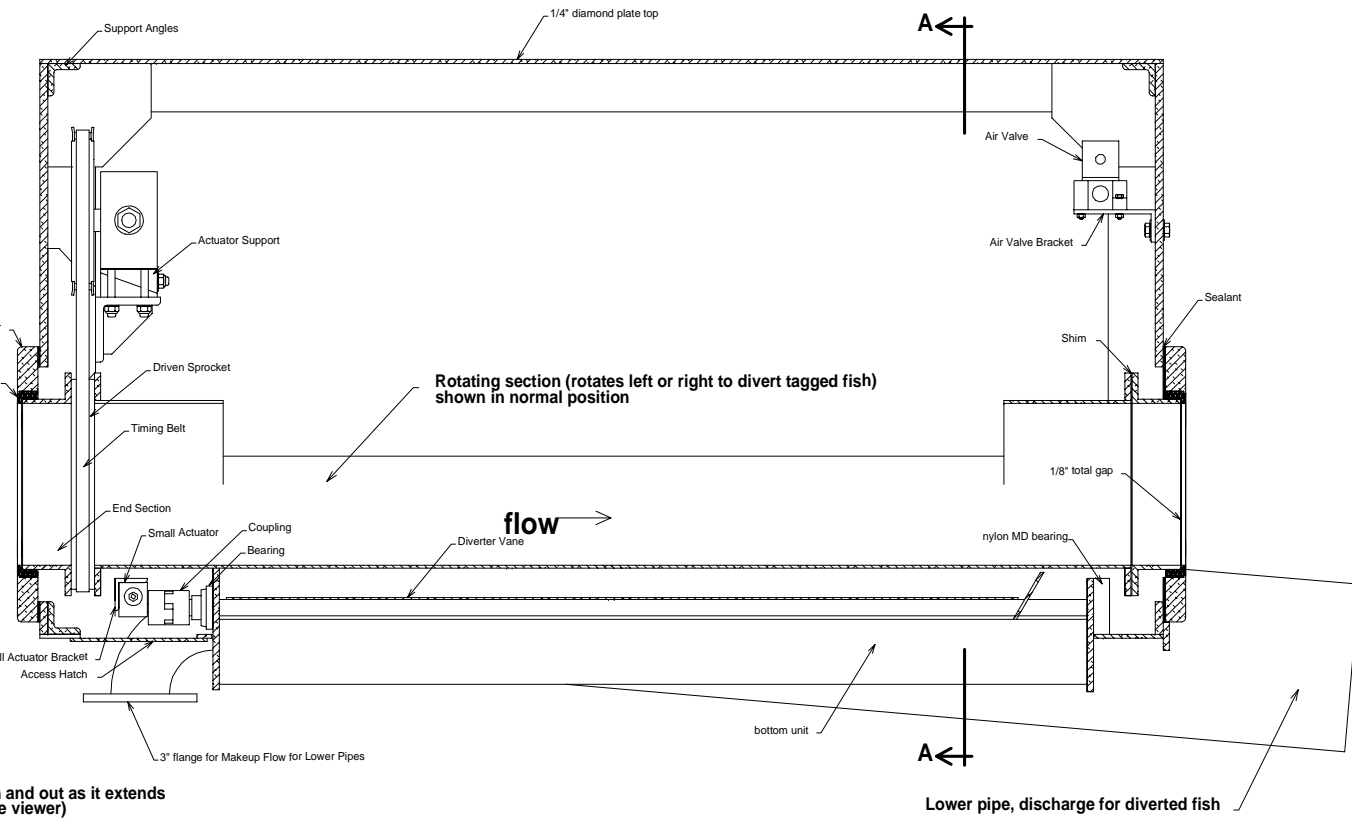
Shipping Weight 760 lbs

AS-BUILT 8/1/97

John Day Juvenile Facility
Rotating Gates
 sht. #1 3-Way Gate Plan & Elevations
 NOAA, National Marine Fisheries Service 3/97

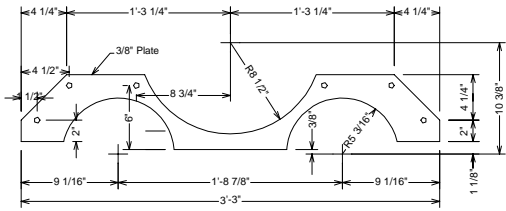


TRANSVERSE SECTION A-A

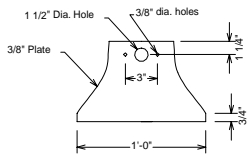


LONGITUDINAL SECTION

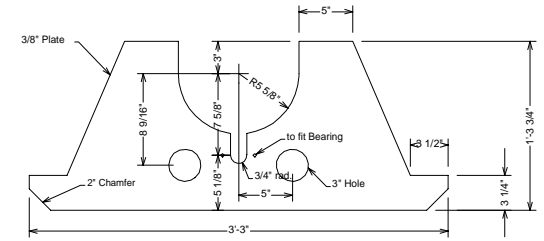
Scale: 1 1/2" = 1'-0"



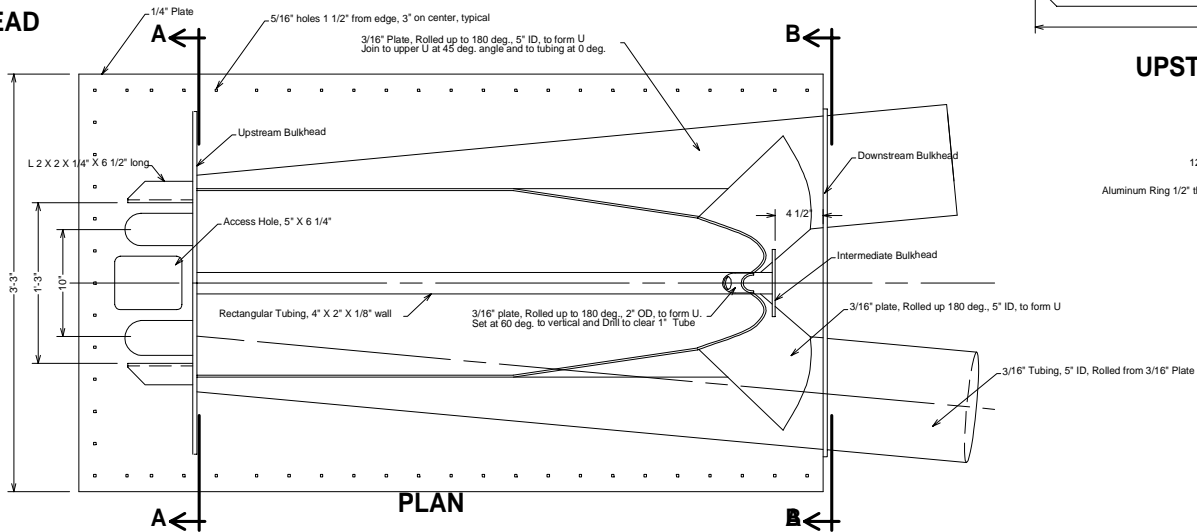
DOWNSTREAM BULKHEAD



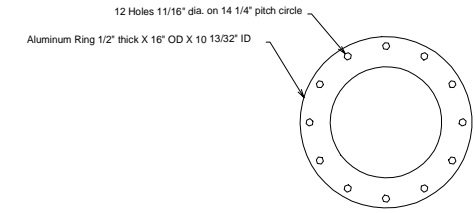
INTERMEDIATE BULKHEAD



UPSTREAM BULKHEAD

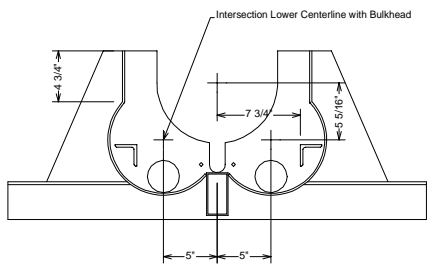


PLAN

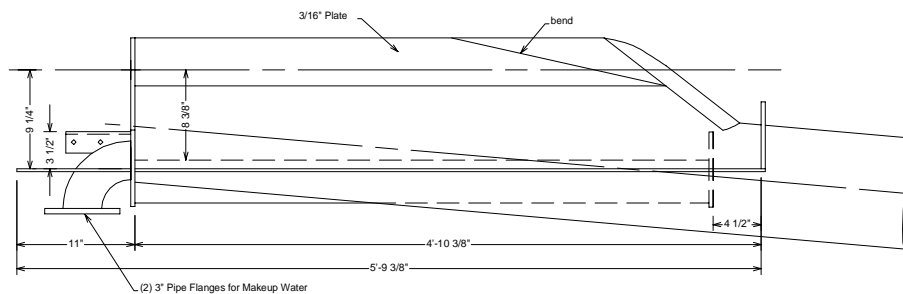


FLANGES

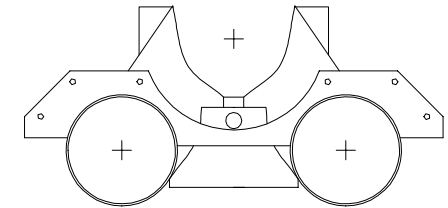
Required for Bolting Lower Unit to 10" Pipe Flanges
2 required - ship loose



SECTION A-A



ELEVATION



SECTION B-B

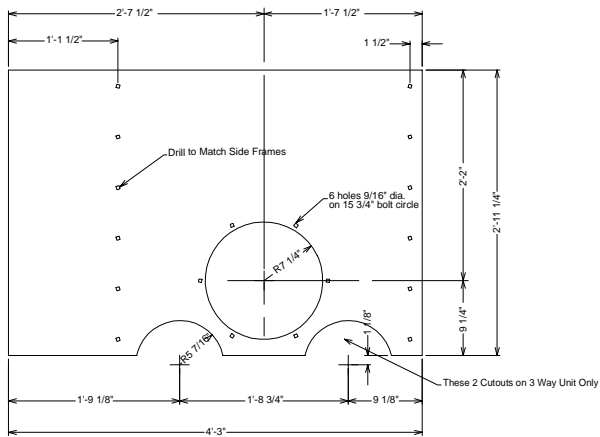
Scale: 1" = 1'-0"

AS-BUILT 8/1/97

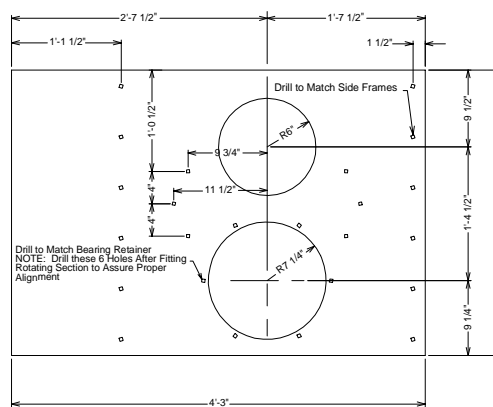
**John Day Juvenile Facility
Rotating Gates**

sht. #5 3-Way Gate Bottom Section

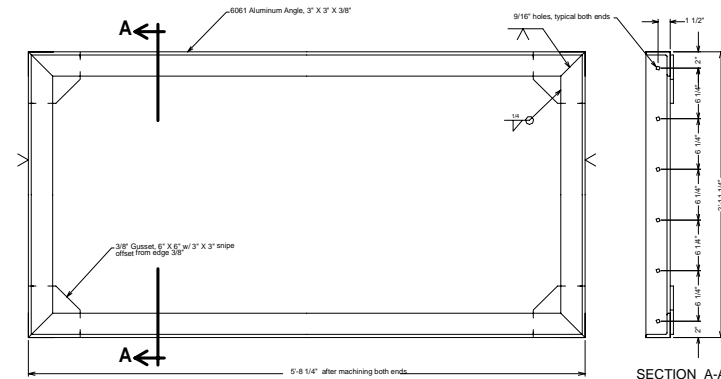
NOAA, National Marine Fisheries Service 3/97



DOWNSTREAM END

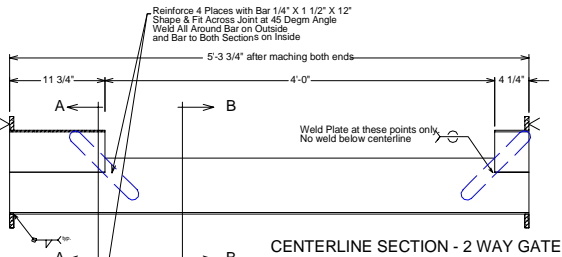


UPSTREAM END

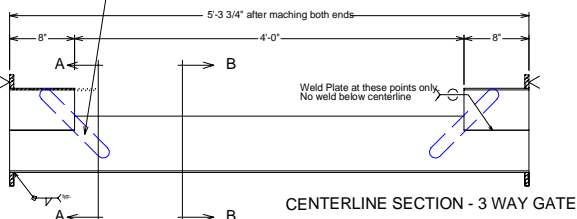


SIDE FRAME

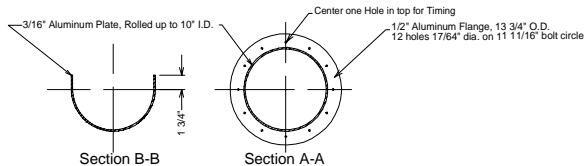
END PLATES



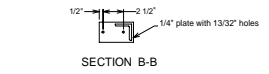
CENTERLINE SECTION - 2 WAY GATE



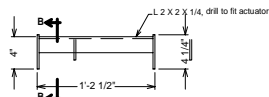
CENTERLINE SECTION - 3 WAY GATE



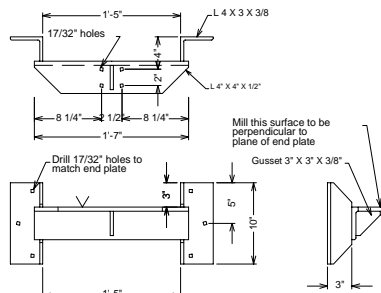
CENTER SECTIONS



SECTION B-B

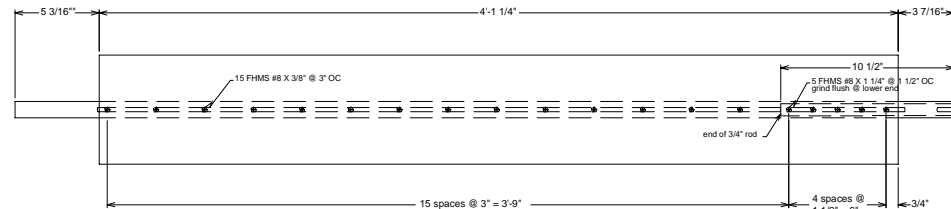


SMALL ACTUATOR BRACKET

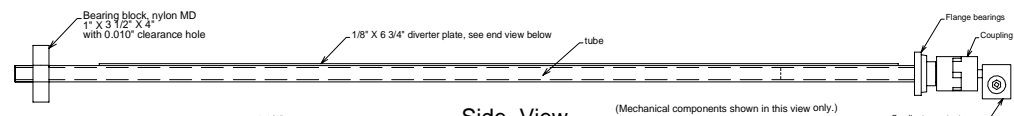


LARGE ACTUATOR BRACKET

BRACKETS FOR ACTUATORS

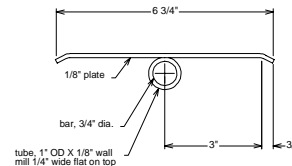


Top View



Side View

Scale: 1 1/2" = 1'-0"



End View

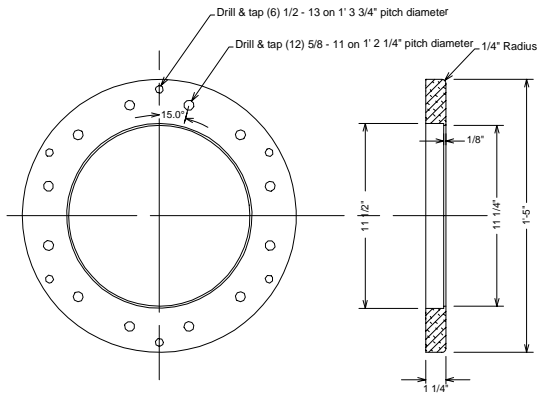
Scale: 3" = 1'-0"

DIVERTER VANE

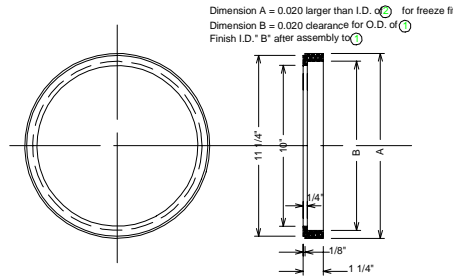
Scale: 3/4" = 1'-0" except as noted

AS-BUILT 8/1/97

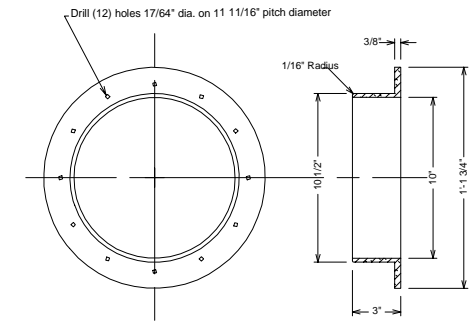
John Day Juvenile Facility
Rotating Gates
 sht. #7 Fabricated Parts
 NOAA, National Marine Fisheries Service 3/97



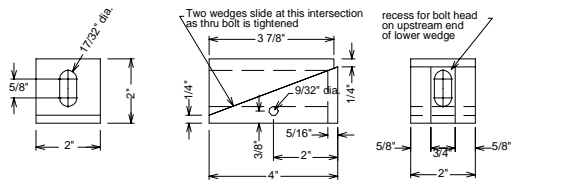
② Bearing Retainer



Retainer Bearing



① End Section

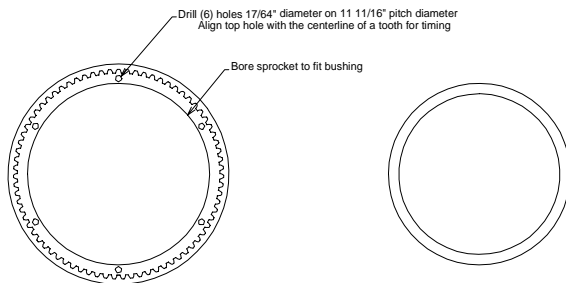


Actuator Support Wedges

Material: 316 Stainless Steel
(Shown in Raised Position)

Scale: 3" = 1'-0"

Note: bolt to 3/8" x 1" x 1 1/2" aluminum stop between all thread on one side to prevent movement of wedges.

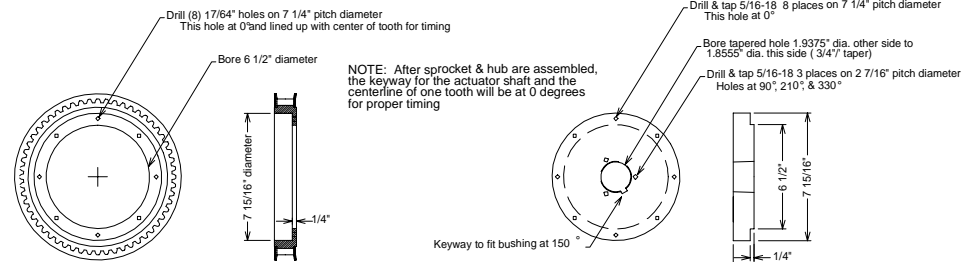


Modification of Gates 14M-75S-20 Sprocket

Driven Sprocket & Bushing

Bushing for Sprocket

Scale: 1 1/2" = 1'-0"
Except as Noted



Drive Sprocket & Bushing

AS-BUILT 8/1/97

John Day Juvenile Facility

Rotating Gates

sht. #8 NC Machined Parts

NOAA, National Marine Fisheries Service 3/97